

ORCHARD GATEWAY

2000 DEERPATH ROAD | AURORA, IL 60506

282,616 SF Available

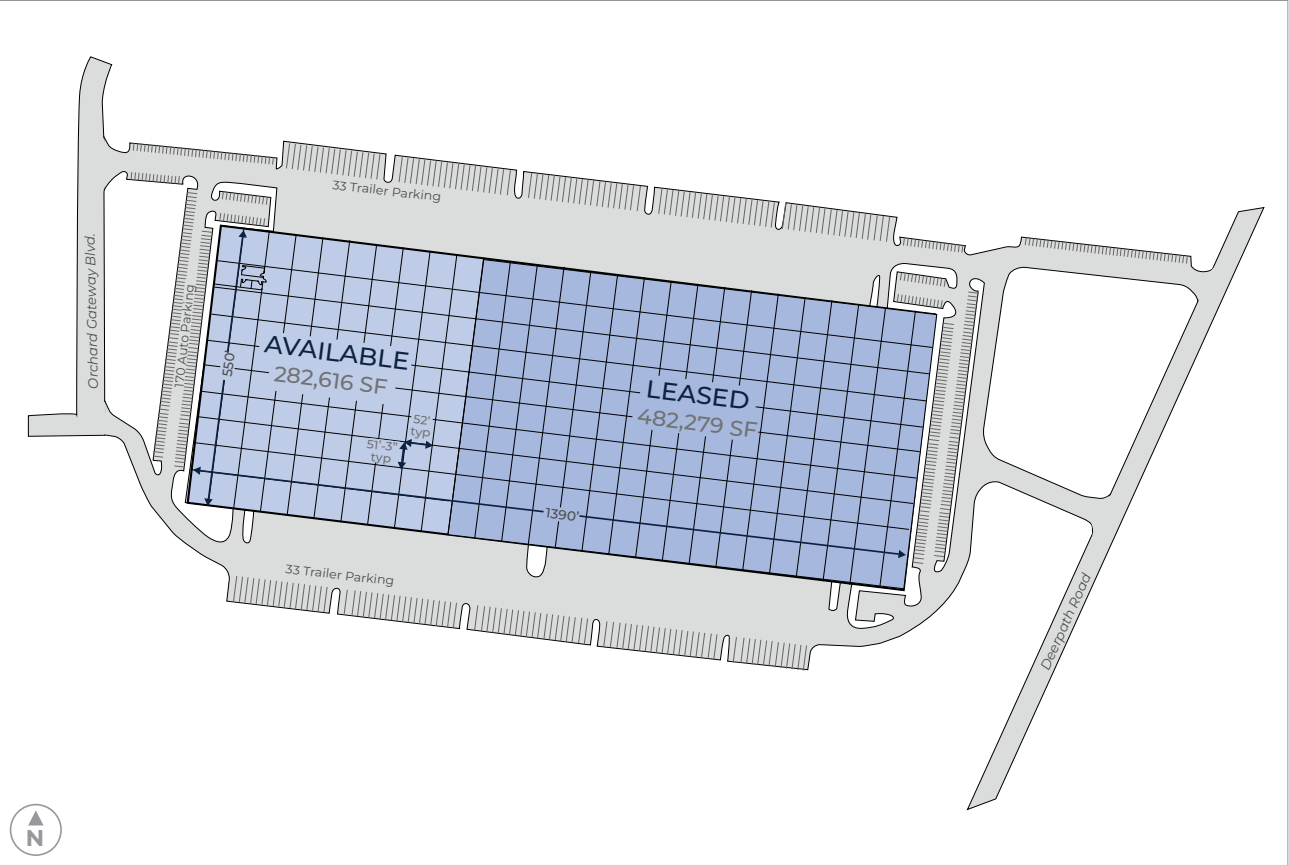
Orchard Gateway is a Class A warehouse distribution facility located in Aurora, Illinois. This 764,895 SF speculative building is one of the largest ever constructed within the I-88 corridor, with 282,616 SF available. Located within the second largest city in the state of Illinois and adjacent to a full interchange at Orchard Road and I-88, companies can be assured abundant and well-qualified labor is available.



ORCHARD GATEWAY

2000 DEERPATH ROAD | AURORA, IL 60506

PROPERTY OVERVIEW



282,616 SF available



2,990 SF office space



36' clear height



2 - Drive-in doors



29 - dock doors (expandable to 52)



170 - auto parking spaces



66 - trailer parking spaces



LED lighting



ESFR sprinkler system

Development



DON SCHOENHEIDER

847 737 0264 (o)
don.schoenheider@hillwood.com

Leasing



BRIAN KLING

847 698 8223
brian.kling@colliers.com

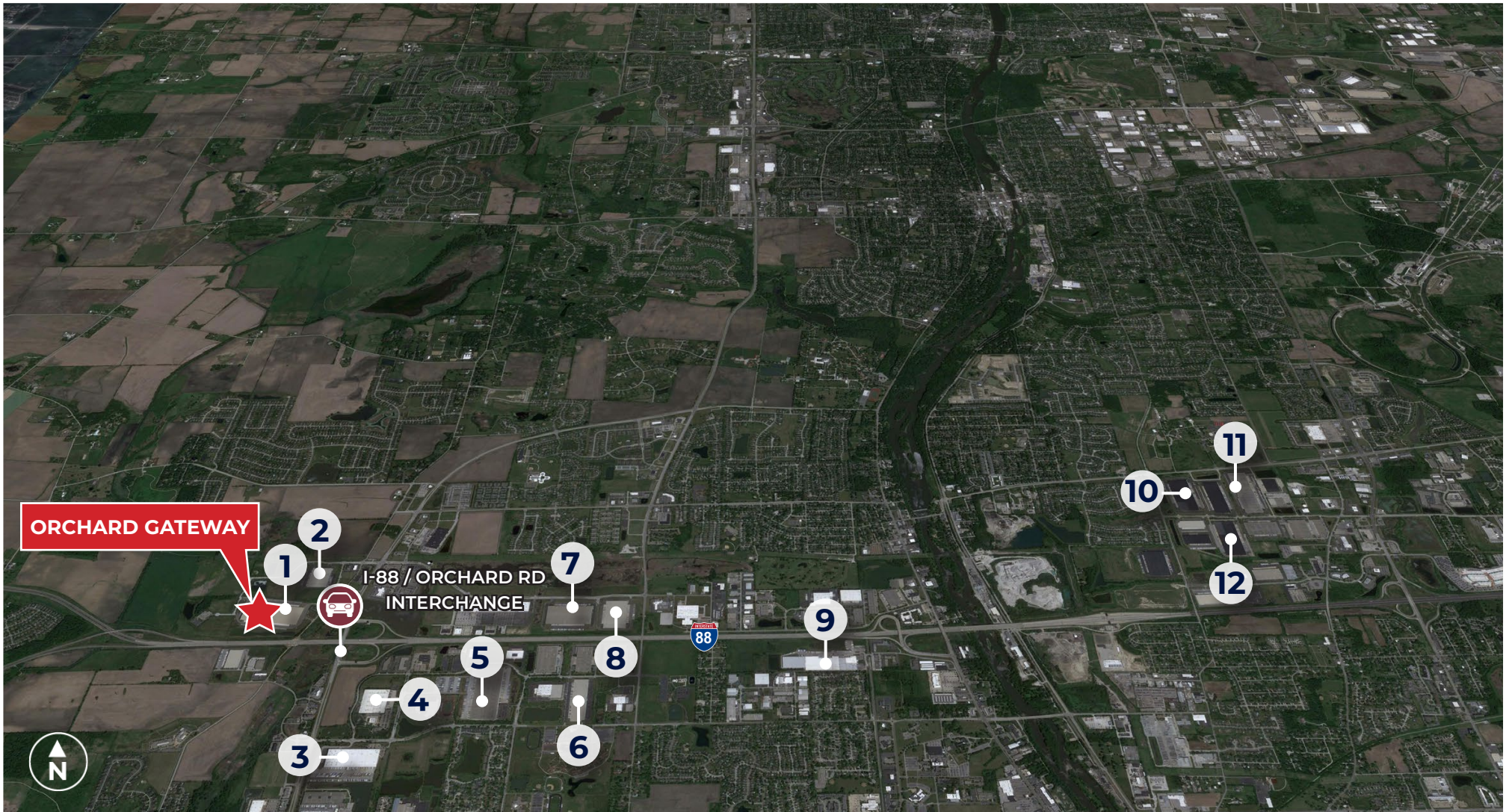
REED ADLER

847 384 2810
reed.adler@colliers.com

ORCHARD GATEWAY

2000 DEERPATH ROAD | AURORA, IL 60506

AREA INFORMATION



ORCHARD GATEWAY

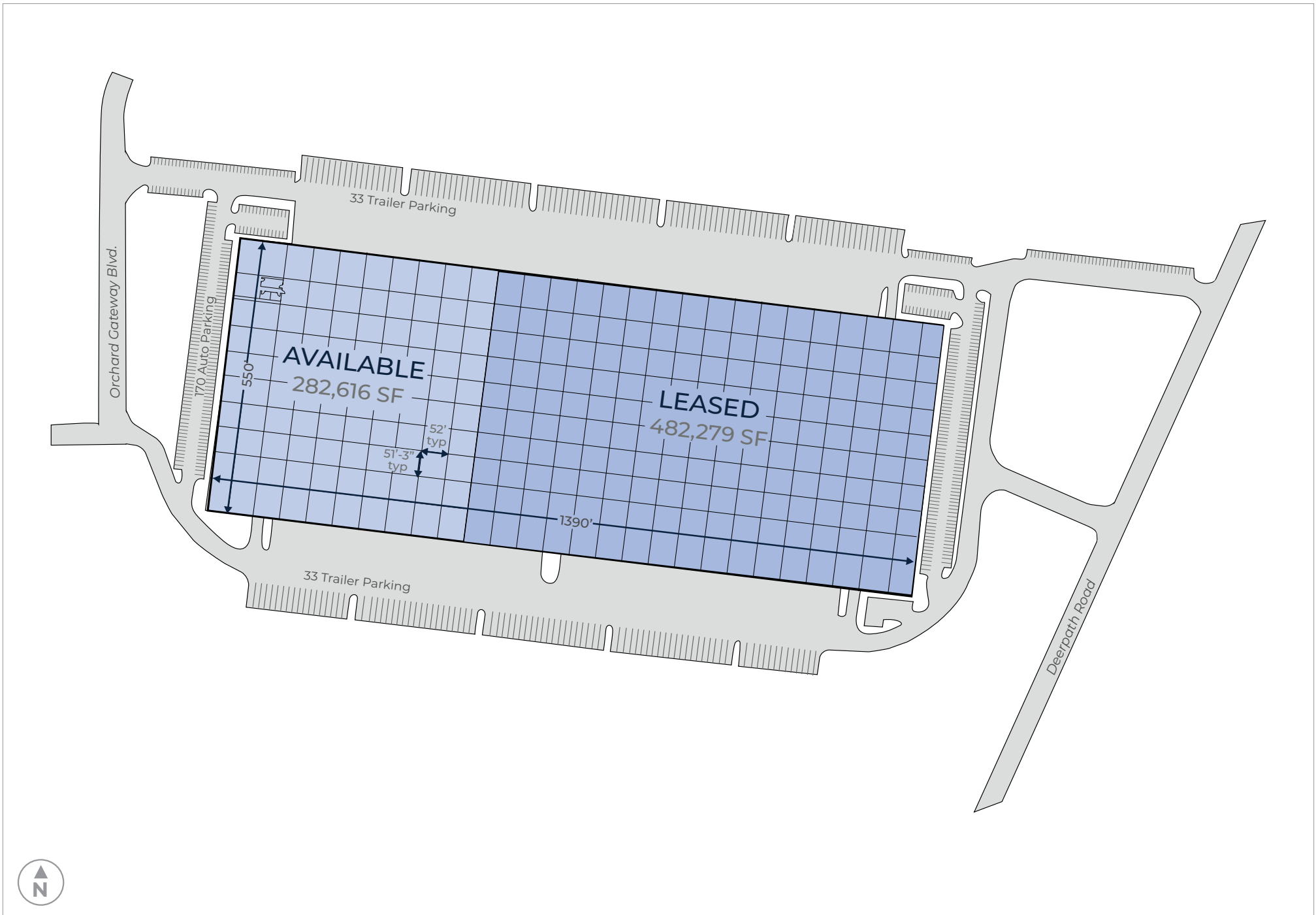
I-88 / ORCHARD RD
INTERCHANGE

BUSINESSES

- | | | |
|-------------|-----------------|-------------------------|
| 1. Veritiv | 5. DHL | 9. DART |
| 2. PPG | 6. Magick Woods | 10. Rockpoint Logistics |
| 3. Mondelez | 7. Nestle | 11. Veritiv |
| 4. Toyota | 8. Glanbia | 12. LTD Commodities |

DRIVE TIMES

- | | | | | | |
|----------------------|----------|-----------|----------------------|----------|-----------|
| UP Intermodal | 🚗 31 mi. | 🕒 39 min. | O'Hare Int'l Airport | 🚗 38 mi. | 🕒 43 min. |
| Midway Int'l Airport | 🚗 45 mi. | 🕒 55 min. | BNSF Intermodal | 🚗 56 mi. | 🕒 65 min. |



ORCHARD GATEWAY

2000 DEERPATH ROAD | AURORA, IL 60506

SITE PLAN

CONTACT

DEVELOPMENT



DON SCHOENHEIDER

847 737 0264 (o) 9550 W. Higgins Rd | Ste 200
don.schoenheider@hillwood.com Rosemont, IL 60018
hillwood.com

LEASING



BRIAN KLING

847 698 8223 (o) 6250 N River Rd #11-100
brian.kling@colliers.com Rosemont, IL 60018
colliers.com

REED ADLER

847 384 2810 (o) 6250 N River Rd #11-100
reed.adler@colliers.com Rosemont, IL 60018
colliers.com