

1030 NORCROSS INDUSTRIAL COURT

1030 Norcross Industrial Court | Norcross, Georgia 30071

100,000 Square Feet | Available for Lease

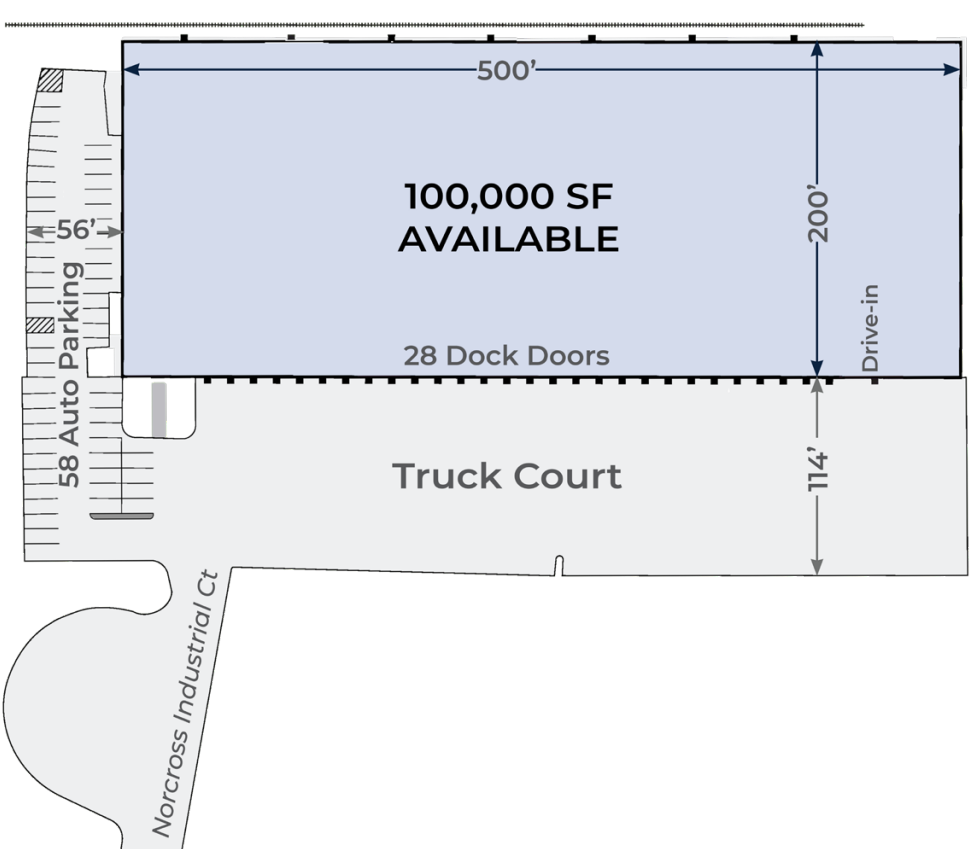
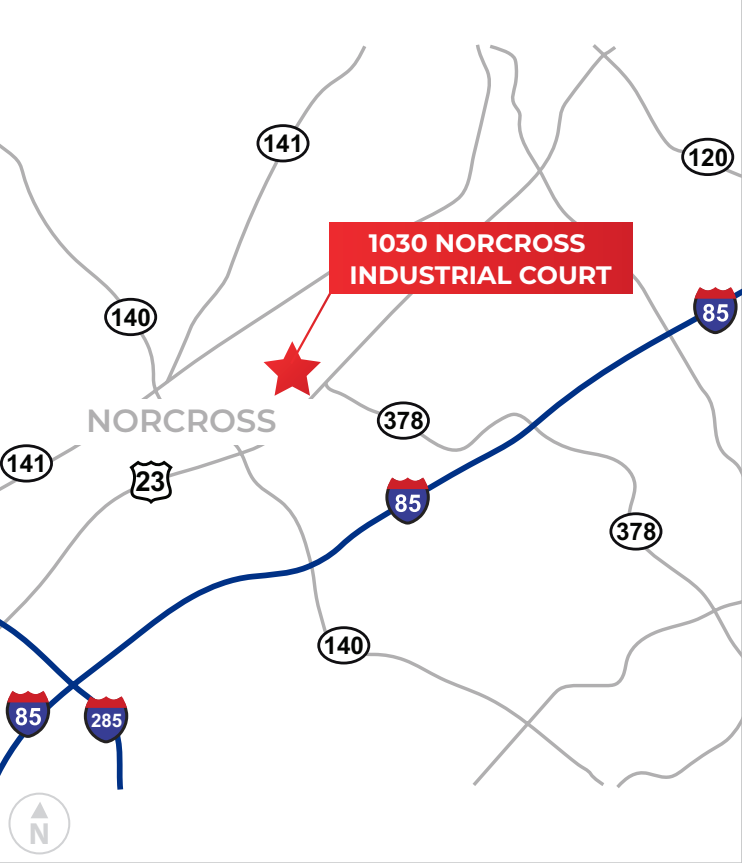
A 100,000 SF distribution facility situated in the northeast industrial submarket of Atlanta, GA. The building offers premier access to Interstate 85 and Interstate 285 and provides a $\pm 24'$ clear height, 28 dock high doors and 3,100 SF of office.



1030 NORCROSS INDUSTRIAL COURT

1030 NORCROSS INDUSTRIAL COURT | NORCROSS, GEORGIA 30071

PROPERTY OVERVIEW



± 3,100 SF office



Front load Configuration



± 24' clear height



41' x 40' typical column spacing



28 – 9' x 10' dock high doors
(18 with levelers)



1 – 12' x 14' drive in door



± 114' truck court



58 – auto parking space



5 – 4' x 4' skylights per bay
natural lighting



1,200 amp, 120/208 volt power



LED lighting (to suit)

Development



TONY BLAKE

770 407 4759 (o)
tony.blake@hillwood.com

Leasing



RICK SPILLER, SIOR

404 771 3673 (c)
rspiller@whnre.com



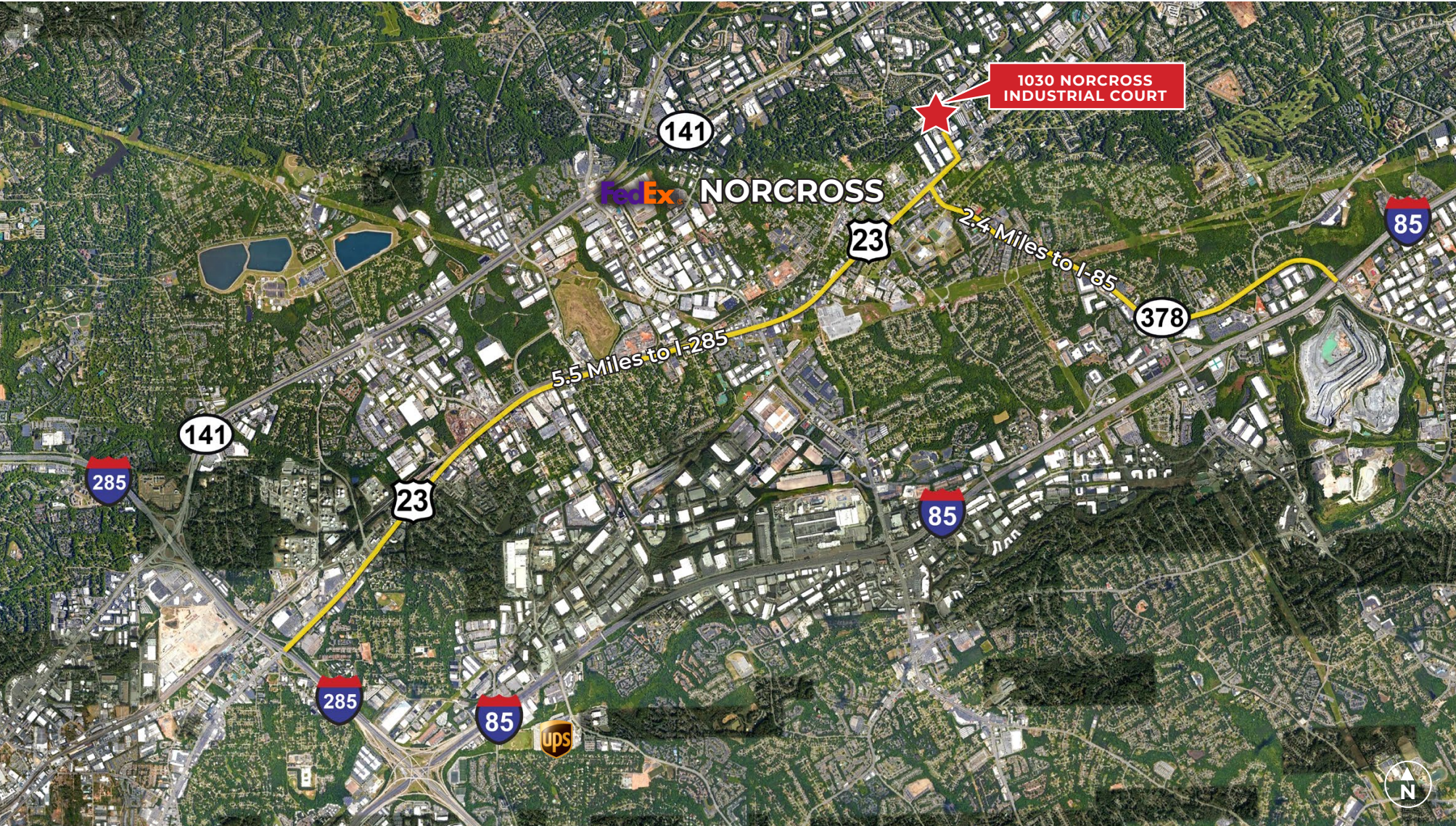
ROSS SPILLER

678 983 8445 (c)
ross@whnre.com

1030 NORCROSS INDUSTRIAL COURT

1030 NORCROSS INDUSTRIAL COURT | NORCROSS, GEORGIA 30071

AREA INFORMATION



DRIVE TIMES

Interstate 85



2.4 mi.



6 min.

Interstate 285



5.5 mi.



11 min.

FedEx Ground Terminal



3.1 mi.



10 min.

UPS Distribution Hub



6.7 mi.



13 min.

Hartsfield-Jackson International Airport



31 mi.



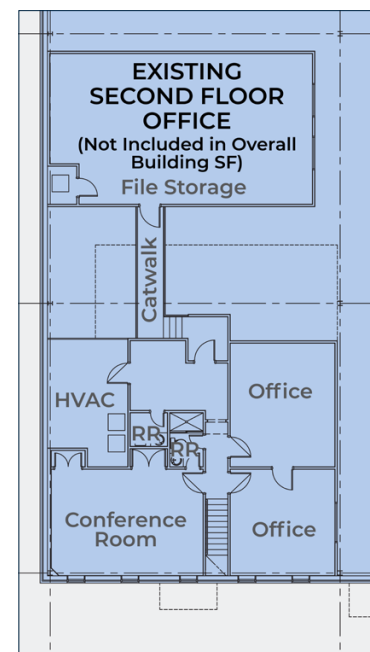
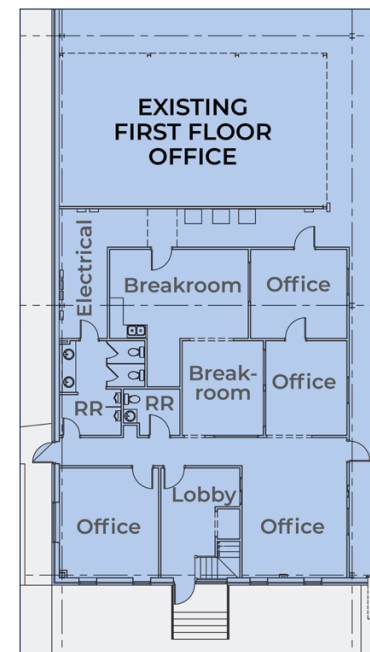
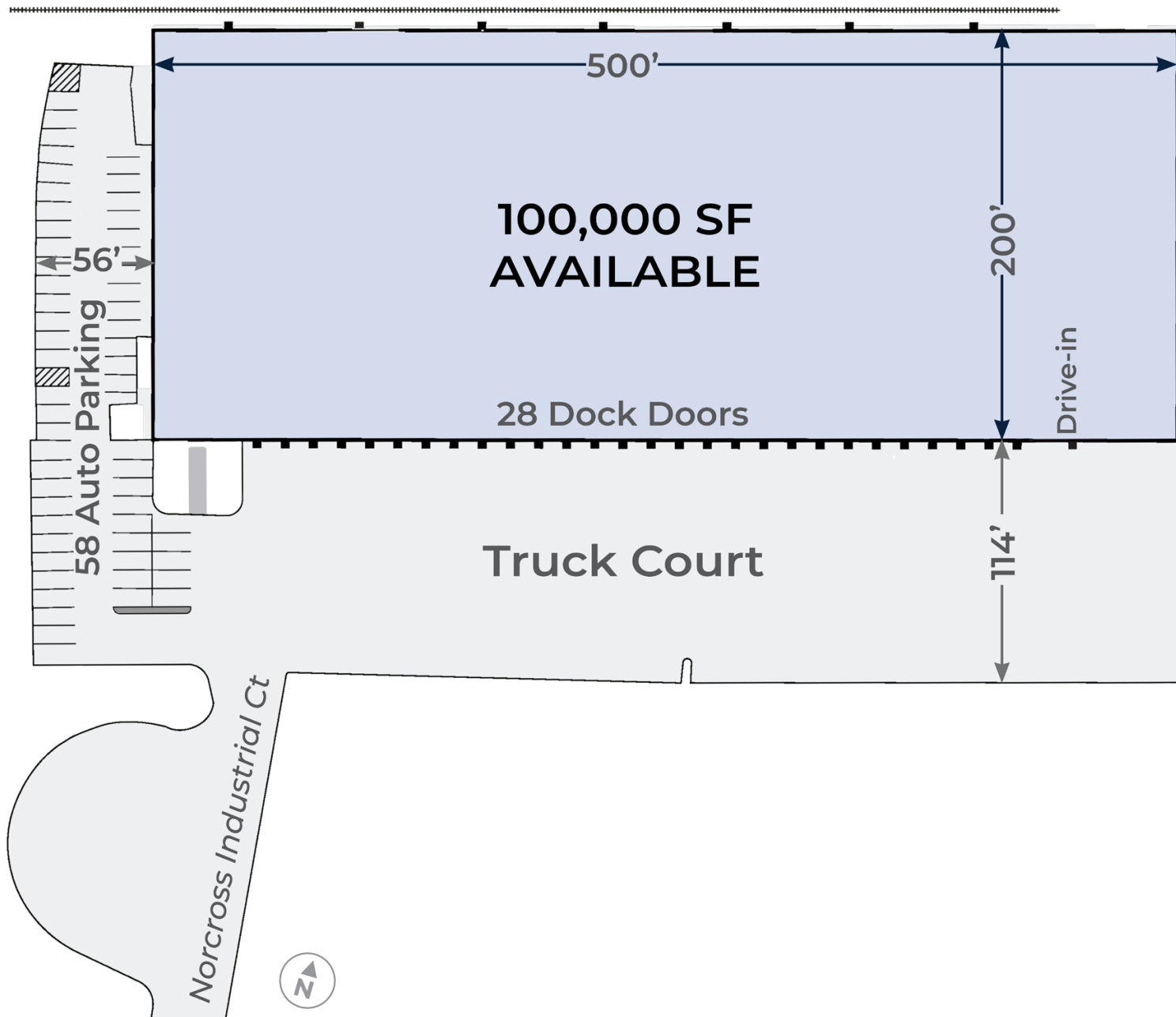
39 min.

1030 NORCROSS INDUSTRIAL COURT

1030 NORCROSS INDUSTRIAL COURT | NORCROSS, GEORGIA 30071

PROPERTY PHOTOS





1030 NORCROSS INDUSTRIAL COURT

1030 NORCROSS INDUSTRIAL COURT | NORCROSS, GEORGIA 30071

SITE PLAN

CONTACT

DEVELOPMENT

H HILLWOOD
A PEROT COMPANY®

TONY BLAKE

770 407 4759 (o) 3414 Peachtree Rd NE | Ste 960
tony.blake@hillwood.com Atlanta, GA 30326
hillwood.com

LEASING

**WILSON
HULL
& NEAL**
REAL ESTATE, LLC

RICK SPILLER, SIOR

404 771 3673 (c) 1600 Northside Dr NW | Ste 100
rspiller@whnre.com Atlanta, GA 30318
whnre.com



This information has been obtained from sources believed reliable, but has not been verified for accuracy or completeness. You should conduct a careful, independent investigation of the property and verify all information. Any reliance on this information is solely at your own risk. Hillwood and the Hillwood logo are service marks of Hillwood. All other marks displayed on this document are the property of their respective owners, and the use of such logos does not imply any affiliation with or endorsement of Hillwood. Photos herein are the property of their respective owners. Use of these images without the express written consent of the owner is prohibited.